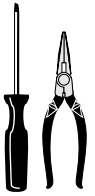




# Mounting and maintenance instructions

- Franke rotary tables series LTA, LTB



- | High load capacity
- | High precision
- | Rotary tables with large free space in the centre
- | Light weight basic bodies from aluminium
- | Large selection range
- | High economy due to long service life

## 1. General notes

Franke rotary tables and goniometers are compact and have a high load capacity. They are mainly used for mounting measuring and testing applications.

All rotary tables have an aluminium body and due to the integrated Franke system they have an extraordinary stiffness against tilt.

## 2. Types

Series LTB: mainly for displacement and positioning applications.

The series LTA has compact sizes and is designed for fast rotary movements. Previously used in assembly and handling applications.

The preselection can be made by means of the tables in the catalogue. Please verify whether you choose the right type by a calculation of the carrying capacity.

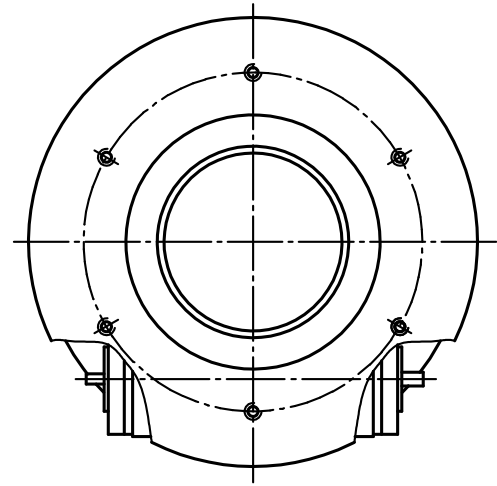
## 3. Fastening/mounting

### Series LTB

Fastening at the basis is effected by screws of quality 8.8. All fastening bores and through holes are accessible from outside.

### Serie LTA

The fastening will be done by 4 x M6x50-screws (quality 8.8) near the centre of the rotary table (without drawing).



LTB

Tightening torques for fastening screws in [Nm]

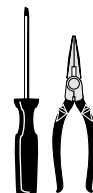
screw size	screw DIN912 quality 8.8
M6	10
M8	25
M10	49
M12	86

The tightening torques of the fastening screws should be checked every 6 months.



## Mounting and maintenance instructions

- Franke rotary tables series LTA, LTB



### 4. Displacement of the limit switch cams

The limit switch cams can be displaced if necessary. This should not be made but with the rotary table in stationary condition. With series LTB the limit switch cams are on the bottom side of the table plate. These are clamping cams which are put into a groove where they are clamped by a hexagon socket threaded pin. The position of the clamping cams can be changed by untightening the threaded pin by means of a hexagon socket key. Afterwards the threaded pins have to be tightened again.

For series LTA the limit switches and switch cams are integrated in the rotary table. They can be reached for adjusted by opening the coverplate on the back side of the table.

Limit switches and limit switch cams are integrated in the motorized version. The connection plan comes with the corresponding consignment. Connection is not allowed to be made unless in idle condition.

the backlash has to have a minimum of around 0,01mm (measured on the outer diameter of the rotary plate).  
- Tighten again the 2 fixing screws on each side of the bearing flange of the wormshaft.  
(Qual. 8.8 Md=3Nm).

We shall be glad to be at your disposal for further information at any time.

**Franke GmbH**  
**Obere Bahnstr. 64**  
**73402 Aalen**  
**Tel.: 07361/920-0**  
**info@franke-gmbh.de**

**Postfach 1280**  
**73431 Aalen**  
**Fax.: 07361/920-120**  
**www.franke-gmbh.de**

We cannot take responsibility for misprints. We reserve the right to technical modifications.

### 5. Connection of the motors

With the motorized version the valid connection plan is enclosed to the consignment of the product. Connection is not allowed to be made unless in idle condition.

### 6. Maintenance / Lubrication:

The maintenance of rotary tables and goniometers of the standard series is reduced to the relubrication with ball bearing grease. The first lubrication of the bearing rests and the worm drive is made in our works with the grease make *Klüber Isoflex Topas NCA 52*. Please observe the consistency.

On page 3 you'll see an overview about the different kind of types of rotary tables. You can find the individuell lubricating points and the quantity of grease individually has to be used.

In order to guarantee uniform application of grease, all rotary tables are to be turned during lubrication.

Attention: Due to the risk of an accident pay attention to disturbing parts during turning!

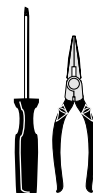
### 7. Relubrication quantity/relubrication periods

Generally all standard rotary tables are provided with a long-term lubrication ex works. We recommend you to relubricate depending on the application every 6 months or 1000 running hours.

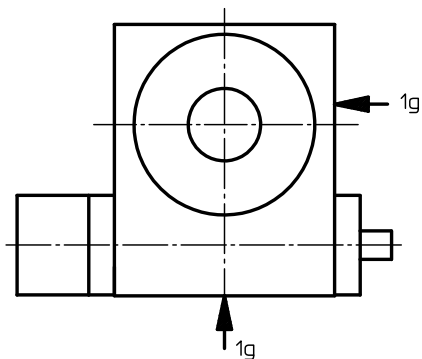
Relubrication (approx. values in (g) per greasing point):

#### 7. Clearance setting (LTB)

- Remove wormshaft cover.
- Turn at the wormshaft as long as you can find the position of lowest backlash at the rotary plate.
- Loosen the 2 deeper set cylinder screws on each side of the bearing flange of the wormshaft and tighten them again very lightly.
- Tighten the both screws on the frontside of the table, to move the wormshaft against the wormwheel.
- Keep care! To guarantee the lubrication in the worm gear,

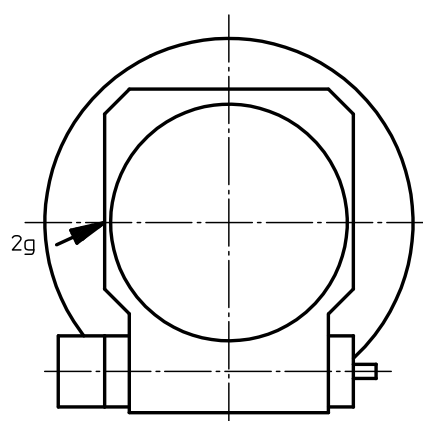


see all lubricating points for LTA-, LTB-series including the recommended quantity



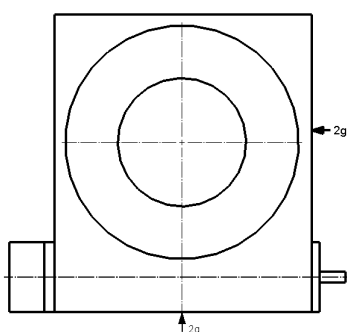
Schmiernippel DIN3405-D1/AØ5

**LTA 100**



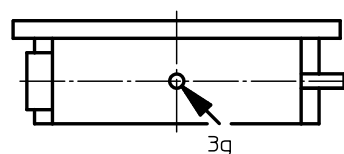
Schmiernippel DIN3405-D1/AØ6

**LTB 125**



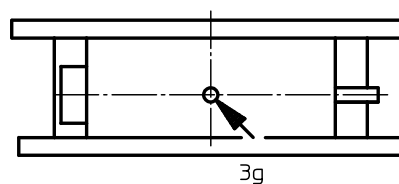
Schmiernippel DIN3405-D1/AØ5

**LTA 200**



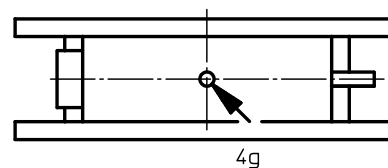
Schmiernippel DIN3405-D1/AØ6

**LTB 175**



Schmiernippel DIN3405-D1/AØ6

**LTB 265**



Schmiernippel DIN3405-D1/AØ6

**LTB 400**