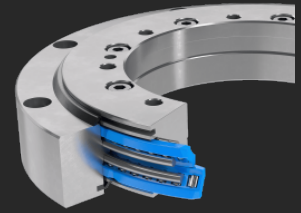


Aluminium bearing assemblies with rollers, highly loadable Type LVG



Franke LVG bearing assemblies are suitable for the highest load capacities and convince with excellent running smoothness and rigidity.

Description

Franke bearing assemblies type LVG are bearing assemblies made of aluminum, designed as double row angular contact roller bearings with integrated bearing elements. LVG bearing assemblies are suitable for the highest load ratings. They convince by high rigidity, low rotational resistance and low weight. Designed as roller bearings, they can support high loads from all directions and are insensitive to shocks and vibrations. Franke LVG are sealed on both sides and are set with preload. By using aluminum, Franke bearing assemblies type LVG are 60% lighter than comparable steel bearings.

Properties

| | |
|----------------|-----------|
| Smooth running | ● ● ● ● ● |
| Resilience | ● ● ● ● ● |
| Speed | ● ● ● |
| Stiffness | ● ● ● ● ● |
| Weight | ● ● ● ● ● |
| Price | ● ● |

Technical data

Material

Inner / Outer ring: aluminium, anodized
 Ball race rings: hardened and tempered chrome-silicon steel
 Rolling element: hardened rolling bearing steel
 Cage: polyamide or thermoplastic polyurethane
 Sealing: NBR

Operating temperature

-20 °C to +80 °C, short-term up to +100 °C

Peripheral speed

Max. 4 m/s

Lubricant

Isoflex Topas NCA52

Relubrication

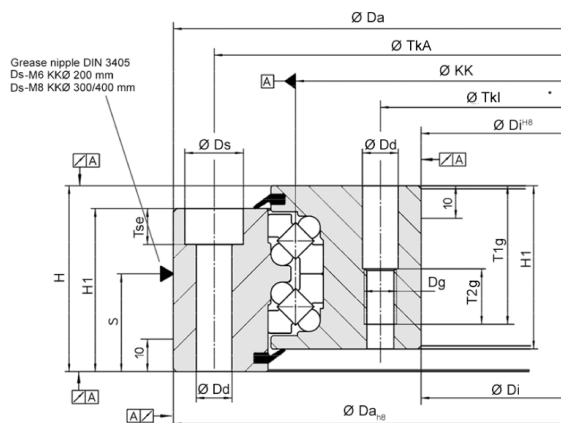
Via grease nipples to DIN 3405

Aluminium bearing assemblies with rollers, highly loadable Type LVG

Innovation in Motion



Data tables



LVG Table part 1

| Name | KKØ mm | Dimensions mm | | | | | | | | | | | | Attachment per ring |
|---------|-----------|------------------|----|----|----|------|-----|-----|-----|------------------|------------------|-----|-----|---------------------|
| | | Ds | Dd | H | H1 | Dg | Tse | T1g | T2g | Da _{H8} | Di ^{H8} | TkA | Tkl | |
| LVG-200 | 200 | 15 | 9 | 47 | 40 | M 8 | 9 | 35 | 15 | 262 | 140 | 243 | 159 | 8x |
| LVG-300 | 300 | 18 | 11 | 57 | 50 | M 10 | 11 | 43 | 17 | 375 | 223 | 350 | 248 | 10x |
| LVG-400 | 400 | 18 | 11 | 57 | 50 | M 10 | 11 | 43 | 17 | 475 | 323 | 450 | 348 | 14x |

LVG Table part 2

| Name | KKØ mm | Load ratings kN | | | | Stat. M. N | Weight kg | Order no. | Delivery time* | |
|---------|-----------|--------------------|-----------------|----------------|----------------|-----------------|--------------|-----------|----------------|--|
| | | C _{0a} | C _{0r} | C _a | C _r | C _{0m} | | | | |
| LVG-200 | 200 | 309 | 124 | 39 | 36 | 12.400 | 4,1 | 604617 | 12 weeks | |
| LVG-300 | 300 | 617 | 247 | 78 | 72 | 37.050 | 9,3 | 606236 | 12 weeks | |
| LVG-400 | 400 | 827 | 331 | 90 | 83 | 66.200 | 12,4 | 604618 | 12 weeks | |

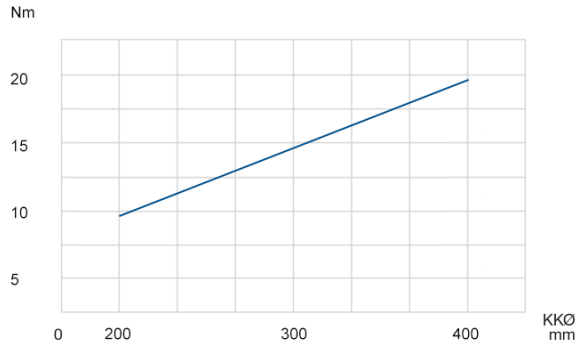
* Prices and delivery times are ex works Germany and are subject to change without notice. In other countries, prices and delivery times may vary due to different taxes, duties, charges and fees.
For actual sales prices and delivery conditions in your country, please contact our local representative.

Aluminium bearing assemblies with rollers, highly loadable Type LVG

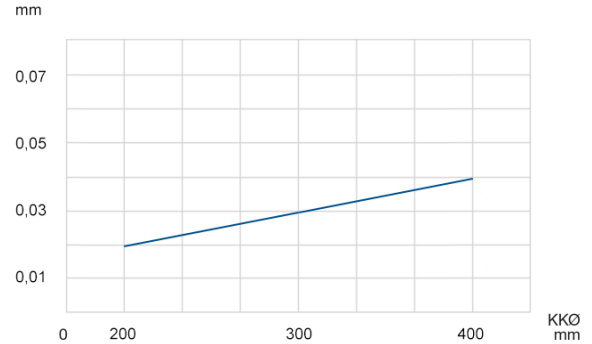
Innovation in Motion



Rotational resistance



Radial and axial runout accuracy



Contact

Franke GmbH
Obere Bahnstraße 64
73431 Aalen - Germany

Tel. +49 7361 920-0
Fax +49 7361 920-120
info@franke-gmbh.de

DIN EN ISO 9001 QM
DIN EN ISO 14001 QM

Created: 17.02.2025