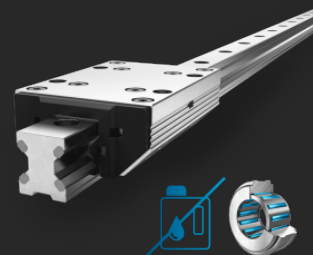


# Linear Guides Type FDE-K

## Double rail and Cassette

### Lubricant free



Aluminum roller guides of type FDE are equipped with lubricant-free and needle-bearing rollers.

## Description

Franke FDE linear guides are equipped with lubricant-free, high-quality needle bearings and are made almost entirely of lightweight aluminum. They are suitable for linear motion tasks in almost all industries, especially for use in food production or in clean rooms. Rail elements can be manufactured in a length of 200 mm to 4000 mm and, on request, can also be linked endlessly.

## Characteristics

<b>Rollers</b>	Lubricant-free needle bearings
<b>Raceway</b>	Spring steel, standard

## Properties

<b>Resilience</b>	●
<b>Dynamics</b>	● ●
<b>Corrosion resistant</b>	● ●
<b>Non magnetic</b>	● ●
<b>Lubricant free</b>	● ● ● ● ● ●
<b>Price</b>	● ● ●

## Technical data

### Stroke length

One piece from 200 mm to 4000 mm, connectable on request

### Material

Cassette plate, roller shoes,  
 Rail body: aluminum, anodized  
 Raceways: spring steel  
 Rollers: bearing steel

### Operating temperature

-20 °C to +80 °C

### Maximum speed

1 m/s

### Maximum acceleration

40 m/s<sup>2</sup>

### Mounting position

Any

### Lubricant

Lubricant free, maintenance free

# Linear Guides Type FDE-K

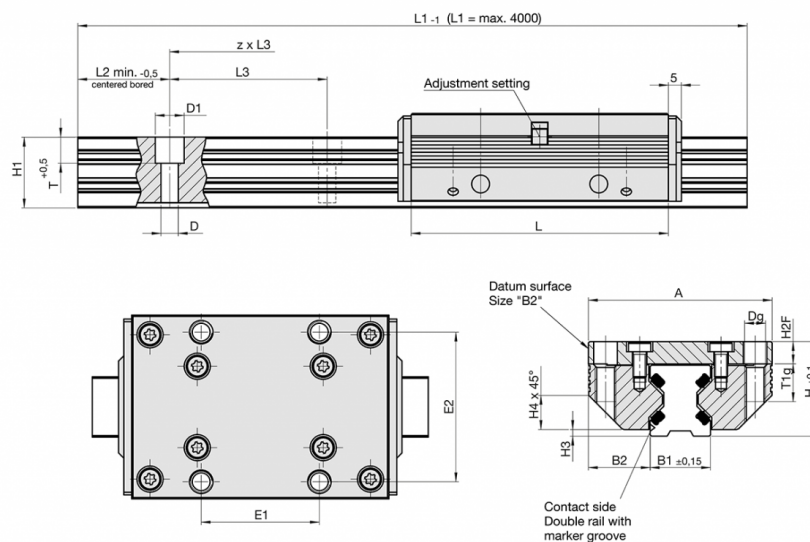
## Double rail and Cassette

### Lubricant free

Innovation in Motion



#### Data tables



#### FDE-K

Size	Dimensions mm								
	A	L	H	B1	B2	D	D1	Dg	E1
12	37	64	19	12,00	12,50	3,4	6	M 4	25
15	47	78	24	15,50	15,75	4,5	8	M 5	30
20	63	92	30	21,00	21,00	5,5	10	M 6	40
25	70	98	36	23,00	23,50	6,6	11	M 8	45
35	100	135	48	32,00	34,00	9,0	15	M 10	62
45	120	165	60	45,00	37,50	11,0	18	M 12	80

#### FDE-K

Size	Dimensions mm								
	E2	H1	H2F	H3	H4	L2	L3	T	T1g
12	30	14,7	4,0	1,4	5,5	10	40	5,5	8
15	38	18,7	5,0	2,0	8,0	10	60	6,0	10
20	53	22,6	7,0	2,0	11,0	10	60	8,0	12
25	57	27,0	8,5	2,5	13,0	10	60	10,0	16
35	82	37,0	10,5	3,5	20,0	12	80	11,5	20
45	100	46,0	13,5	4,0	22,0	16	105	14,5	24

# Linear Guides Type FDE-K

## Double rail and Cassette

### Lubricant free

Innovation in Motion



#### Basic load ratings, weight, length

Size	Load ratings N		Moment capacities cassette Nm				Weight kg		Order no.	Delivery time*	
	C	C <sub>0</sub>	M <sub>0cx</sub>	M <sub>cx</sub>	M <sub>0cy</sub> /M <sub>0cz</sub>	M <sub>cy</sub> /M <sub>cz</sub>	Cassette	Rail/m			
12	350	400	4,0	3,0	6,0	5,0	0,09	0,40	84494T	up to 10 pcs. 1 week	
15	600	700	8,0	6,0	12,0	10,0	0,17	0,80	84396T	up to 10 pcs. 1 week	
20	700	900	12,0	9,0	17,0	14,0	0,35	1,30	84441T	up to 10 pcs. 1 week	
25	1200	1600	25,0	18,0	35,0	25,0	0,50	1,60	84363T	up to 10 pcs. 1 week	
35	2000	2500	58,0	44,0	76,0	58,0	1,40	2,60	84364T	up to 10 pcs. 1 week	
45	4400	5500	180,0	140,0	210,0	170,0	2,50	4,50	84365T	up to 10 pcs. 1 week	

\* Prices and delivery times are ex works Germany and are subject to change without notice. In other countries, prices and delivery times may vary due to different taxes, duties, charges and fees.  
For actual sales prices and delivery conditions in your country, please contact our local representative.

## Contact

Franke GmbH  
Obere Bahnstraße 64  
73431 Aalen - Germany

Tel. +49 7361 920-0  
Fax +49 7361 920-120  
info@franke-gmbh.de

DIN EN ISO 9001 QM  
DIN EN ISO 14001 QM

Created: 20.02.2025